

# ONLINE COGNITIVE TEST SET

## MODEL ACDT-MEDI-B-08

*Rapid, Sensitive, & Internet – based Cognitive Impairment & Cognitive Decline Screening Tests for worldwide cognitive screenings*



**No software. No CD-ROMs. No downloads.  
No special or heavy equipment. No hassles.  
Screens & evaluates cognitive abilities.  
Simply click and connect.™**

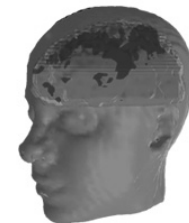
### Benefits

- Completely online
- Very fast, sensitive, & objective
- Self-service
- Instant scores & feedback
- Records, prints, & saves results
- Graphics & statistics of data
- Scientifically proven
- Multimedia & interactive
- User friendly
- Many foreign languages
- Featured in journals & in the News
- Easily exports data
- Touch screen Sytotechnology™ option
- Standardized & paperless tests
- Useful for all ages & cultures
- Ideal assistive technology
- Optimized for repeated administration
- Compliant with 21 CFR Part 11,
- HIPPA, ICH GCP, & ISO 9001:2000
- Engages people who are unable to draw or write

### Online Testing

Each year, millions of clock drawing tests are administered around the world. This set includes the first and only *fully web-based* Clock Drawing Test, one of the most widely used cognitive assessment tests in the entire world, and the Trails B Test, a cognitive tool pioneered by the US Army. This powerful battery is designed to save agencies significant time, labor, and expense to rapidly screen and monitor subjects for cognitive decline or impairment. All tests are administered online. Instant scores, reports, statistics, and feedback are provided through this unique web-based application that enables simultaneous review and comparison of data across the world, between agencies and clinicians, in real time.

This battery effectively reduces wait time and costs associated with the use of other cognitive tests. Our cognitive test battery offers great potential for cognitive evaluations to aid medical decisions. These tools, and especially our Automatic Clock Drawing Test™, ensure that subjects of all ages, cultures, and educational backgrounds will be screened, monitored, and treated fairly and equally.



*Start screening and monitoring cognition online now using the ACDT-MEDI-B-08.*

### Includes

- Automatic Clock Drawing Test™
- Trail Making Test, Part B

**Screens** cognitive dysfunction • memory • numerical knowledge • visual perception • visual processing • visual attention • selective and divided attention • time conceptualization • visuospatial skills • executive skills



**SpecialtyAutomated**  
1650 South Dixie Highway, Suite 300  
Boca Raton, Florida 33432  
USA

Telephone: 800.364.7340

[www.specialtyautomated.com](http://www.specialtyautomated.com)

